

REISIG AND TAYLOR CONTEMPORARY

Ari Salka, Erica Everage, Kento Saisho
"Skins, Holes, and Hovels"
Oct. 14 - Nov. 11, 2023

Inquire for Prices:
gallery@reisigandtaylorcontemporary.com
text or call Emily (323)819-7990



Ari Salka
Lamentations
2017
Acrylic, Gesso, Chalk Pastel Ink, and Latex Paint on Wood
41 in x 48 in



Ari Salka
Nostalgia Has A Way Of Sealing A Loss We Did Not Know We Were Losing
2022
Acrylic, Latex Paint, Resin, Gesso, Watercolor, Raw Pigment, China Marker
and Oil on Wood
8 in x 10 in



Ari Salka
Hands, They Do Often Reach Out
2022
Acrylic, Enamel China Marker, Gesso, India Ink, Resin, and Latex Paint on Wood
96 in x 20 in

REISIG AND TAYLOR CONTEMPORARY

Ari Salka, Erica Everage, Kento Saisho
"Skins, Holes, and Hovels"
Oct. 14 - Nov. 11, 2023



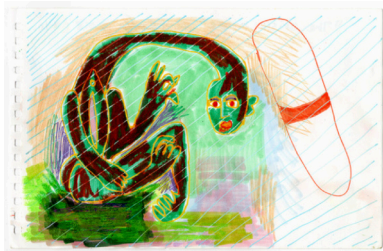
Ari Salka
Green Hands, Blue Clouds
2018
Mixed Media on Paper
8 1/2 in x 5 1/2 in (framed 11 in x 9 in)



Ari Salka
Distant Waters
2018
Mixed Media on Paper
5 1/2 in x 8 1/2 in (framed 11 in x 9 in)



Ari Salka
Hands, Do I Miss You Or Do I Miss Me?
2019
Ink, Acrylic, Pastel, and Oil Pastel on Paper
5 1/2 in x 8 1/2 in (framed 11 in x 9 in)



Ari Salka
When The Body Opens, And The Pill
2018
Mixed Media on Paper
5 1/2 in x 8 1/2 in (framed 11 in x 9 in)



Ari Salka
Flowers and a Chair
2018-2023
Mixed Media on Paper
12 in x 9 in (framed 15 in x 12 in)

REISIG AND TAYLOR CONTEMPORARY

Ari Salka, Erica Everage, Kento Saisho
"Skins, Holes, and Hovels"
Oct. 14 - Nov. 11, 2023



Ari Salka

Pills As Eyes: The Green Angel, The Purple Ghost And The Yellow Woman

2018

Watercolor, Ink, Pastel, and Acrylic on Paper
9 3/4 in x 12 in (framed 12 in x 15 in)



Ari Salka

Hands Can't Reach Far Enough Now

2018-2020

Mixed Media on Paper

9 in x 12 in (framed 12 in x 15 in)



Ari Salka

The House and the Heart

2018-2019

Mixed Media on Paper

9 3/4 in x 12 in (framed 12 in x 15 in)



Ari Salka

The Narrator Is Not Always Clear

2021

Ink, Acrylic and Oil, Pencil and Pastel on Paper

12 in x 9 in (framed 15 in x 12 in)



Ari Salka

Reconciling, 2009-2022

Acrylic, Ink, Resin, Latex Paint and Oil on Canvas

32 in x 48 in

Available, not on view

REISIG AND TAYLOR CONTEMPORARY

Ari Salka, Erica Everage, Kento Saisho

"Skins, Holes, and Hovels"

Oct. 14 - Nov. 11, 2023



Erica Everage

Sheela in the Wall

2023

Acrylic and raw pigment on reclaimed foam mat mounted on wood frame
14.25 in x 11 x 5.75 in



Erica Everage

Sheela Ablaze

2023

Acrylic & raw pigment on reclaimed foam composite matting mounted on wooden box frame
19.5 in x 11 in x 6 in



Erica Everage

Mining

2023

Acrylic, wax, coral resin and raw pigment on reclaimed foam mat and acetate mounted on wood frame
19 in x 13.5 in x 6.5 in



Erica Everage

Ggantija (Hidden Architecture)

2023

Dye, Raw pigments, acrylic, mortar paste, spackle, shellac on reclaimed foam matting mounted on wood panel
37" x 72" x 2.75"

REISIG AND TAYLOR CONTEMPORARY

Ari Salka, Erica Everage, Kento Saisho

"Skins, Holes, and Hovels"

Oct. 14 - Nov. 11, 2023



Erica Everage

A Stele with Glyphs Obscured

2023

Acrylic and raw pigments on reclaimed foam composite matting mounted on wood panel

13 in x 8.5 in



Erica Everage

Puzzling Quarry

2023

Raw pigments, acrylic, wax and copal resin on reclaimed foam matting mounted on wood

31 in x 21 in x 2.75 in



Erica Everage

Lounging Megalith

2023

Raw pigment, chalk pastel and wax on burlap

9 in x 12 in



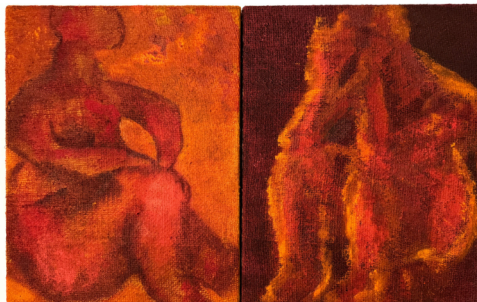
Erica Everage

Apotropaic Display

2023

Watercolor, dye and raw pigment on burlap

16 in x 20 in



Erica Everage

Goddess with Her Consort (diptych)

2023

Dye, raw pigment and acrylic on burlap

14 in x 22 in

Each panel is 14 in x 11 in

REISIG AND TAYLOR CONTEMPORARY

Ari Salka, Erica Everage, Kento Saisho

"Skins, Holes, and Hovels"

Oct. 14 - Nov. 11, 2023



Erica Everage

Glyph

2023

Acrylic and raw pigment on burlap

12 in x 9 in



Erica Everage

Mini Shadow Dancer

2023

Raw, natural pigment and watercolor on burlap

14 in x 11 in



Erica Everage

Sheela Motif

2023

Raw, natural pigment and wax on burlap

12 in x 9 in



Kento Saisho

Four Legged Object

2021

Steel, paint, graphite, patina

4 in x 4 in x 5 in



Kento Saisho

Four Handled Vessel

2021

Steel, paint, patina

4 in x 8 in x 4 in

REISIG AND TAYLOR CONTEMPORARY

Ari Salka, Erica Everage, Kento Saisho

"Skins, Holes, and Hovels"

Oct. 14 - Nov. 11, 2023



Kento Saisho

Two Handed Vessel

2021

Steel, paint, patina

5 in x 2 in x 8 in



Kento Saisho

Conjoined Vessel

2023

Steel, paint, graphite

6 in x 11.25 in x 4 in



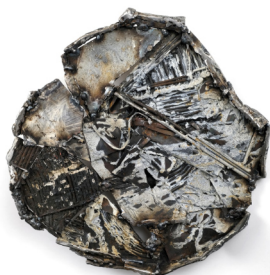
Kento Saisho

Untitled (platter)

2023

Steel, paint, patina, graphite

4 in x 8 in x 16 in



Kento Saisho

Circular Tablet

2023

steel, paint, patina

12 in x 16 in x 2 in



Kento Saisho

Untitled (Tablet 2)

2023

Steel, paint, patina, graphite

9 in x 10 in x 2.5 in

REISIG AND TAYLOR CONTEMPORARY

2680 S. La Cienega Blvd. Los Angeles, CA 90034

+1(323) 819.7990

gallery@reisigandtaylorcontemporary.com

reisigandtaylorcontemporary.com

REISIG AND TAYLOR CONTEMPORARY

Ari Salka, Erica Everage, Kento Saisho

"Skins, Holes, and Hovels"

Oct. 14 - Nov. 11, 2023



Kento Saisho

Tablet

2022

Steel, paint, graphite, patina

10.5 in x 2 in x 14 in



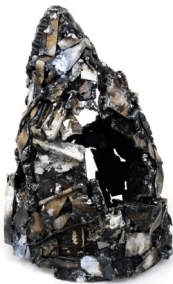
Kento Saisho

Untitled (Tablet)

2023

Steel, paint, patina

12 in x 14 in x 2 in



Kento Saisho

Untitled (Mound)

2023

Steel, paint, patina, mixed media

12"14"x14"



Kento Saisho

Stack

2023

Steel, paint, graphite, patina

5 in x 5 in x 8 in



Kento Saisho

Forged Vessel

2018

Steel, patina

6 in x 13 in x 8 in

REISIG AND TAYLOR CONTEMPORARY

Ari Salka, Erica Everage, Kento Saisho

"Skins, Holes, and Hovels"

Oct. 14 - Nov. 11, 2023



Kento Saisho
Forged Vessel 2
2018
Steel, patina
9 in x 10 in x 7 in



Kento Saisho
Untitled (stone-like object)
2023
Steel, paint, graphite, patina
3 in x 11 x 2 in



Kento Saisho
Object in Steel 5
2022
Steel, paint, patina
16 in x 5 in x 12 in



Kento Saisho
Mound
2022
steel, patina, paint
11 in x 6 in x 14 in



Kento Saisho
Mound 2
2022
steel, paint, patina
12 in x 14 in x 14 in